

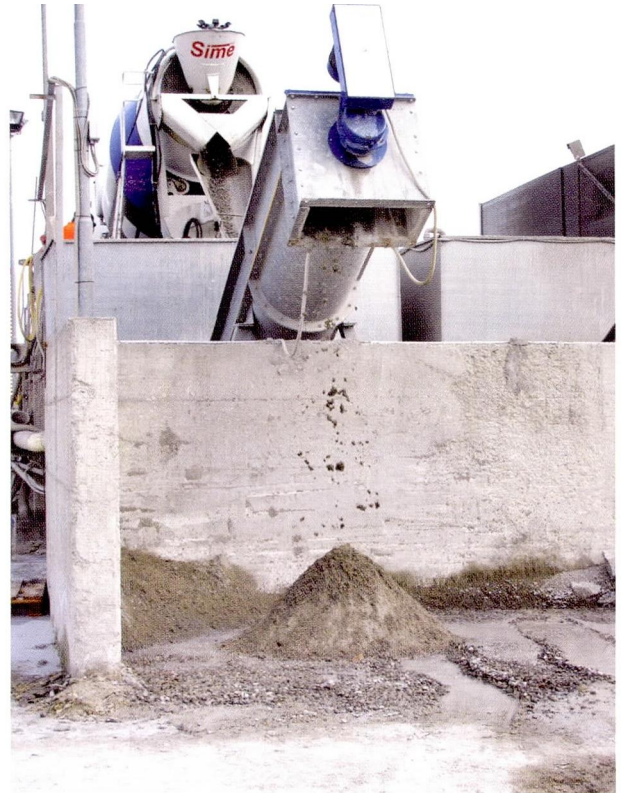
A new CONSEP for concrete reclamation

An innovative range of world-class concrete reclaimers has been introduced to the South African market by WAMGROUP.

WAM South Africa GM, Emilie Marchand, says the company recently launched the environmentally-friendly range of CONSEP 5000 concrete reclaimers to the local market to assist industries in reducing their environmental impact.

“The CONSEP 5000 is designed for use in ready-mixed concrete plants to recover concrete washed out from truck-mixers, and in precast plants to recover concrete from the moulds,” she explains. “The CONSEP 5000 enables the recovery of residual concrete and wash water from truck mixers or concrete pumps, helping concrete manufacturers comply with environmental standards.”

With a recycling capacity of up to 20 m³ per hour, the CONSEP 5000 is a market-leading machine. It has excellent solids-liquid separation and washing of aggregates, as well as large-capacity settling and extracting of fines. The heavy-duty ribbon flight screw is painted and coated with wear-proof, non-stick SINT engineering polymers, which are abrasion resistant, and prevent clogging and unnecessary maintenance periods.”



Marchand adds that concrete batching plants are among the worst polluters in the industry, and the CONSEP 5000 serves as the ideal solution. ■

**More information from WAM SA, Tel: 011 822 2680,
Email: info@wamgroup.co.za**